

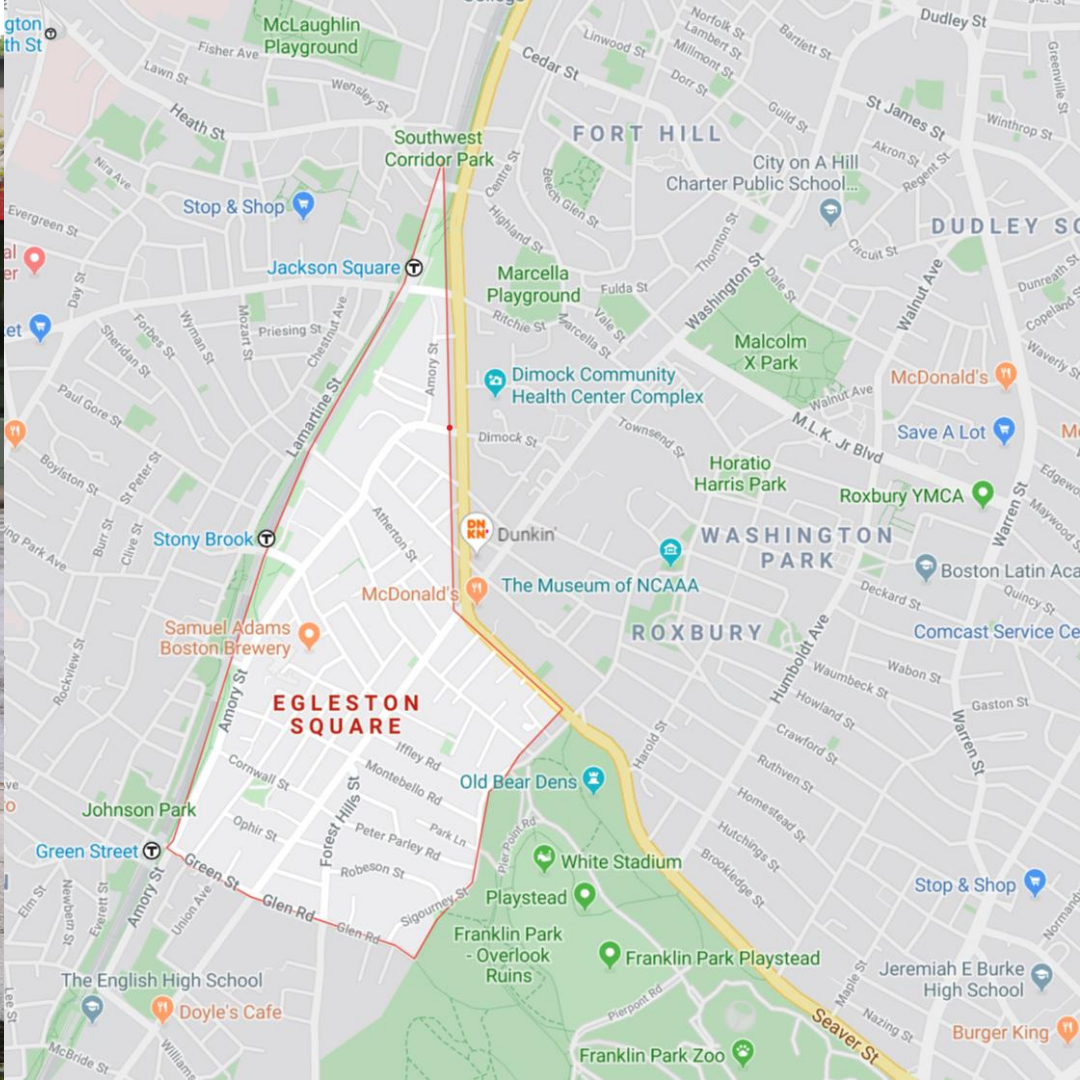


826
BOSTON

Exploring Boston's Neighborhoods: Egleston Square

Alex C., Karl S., George M., Noah K., and Rithvik M.

Disclaimer: Please note that some images are copyrighted. Please do not use this document besides academic and educational purposes. Figures are subject to removal.





Apartment building tracing back to 1880s on 3161 Washington Street



Old single family homes along Boylston Street



Commercial district along Washington St.

FACES OF THE NEIGHBORHOOD

Our Lady of Lourdes Parish Center



Egleston Farmers Market

Opened in 2011, the Farmers Market

- Attracted hundreds of people each week to enjoy
 - Local food
 - Live music
 - Meet their neighbors

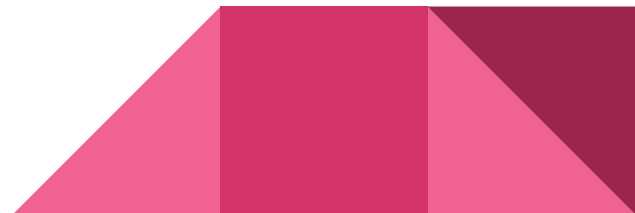


Samuel Adams Brewery



Community Centers

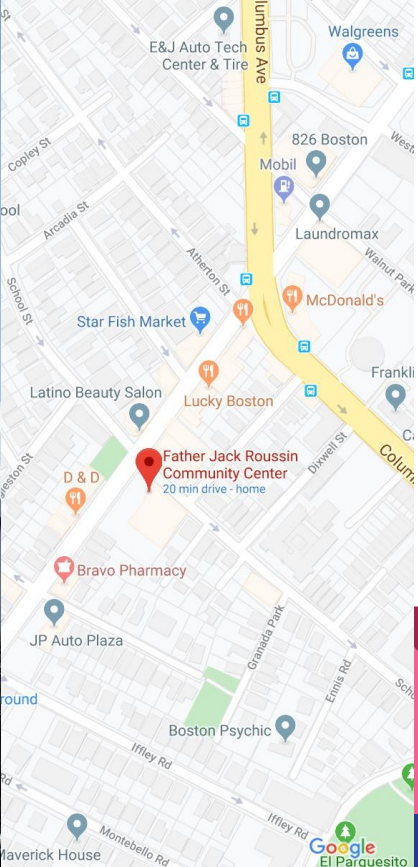
- 826Boston
- Father Jack Roussin Center
- Community Arts Advocates



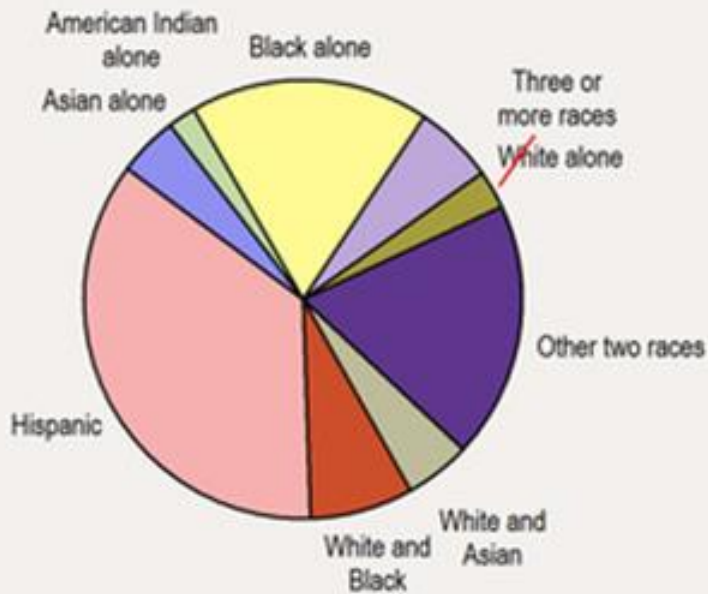
826 Boston



Father Jack Roussin Center



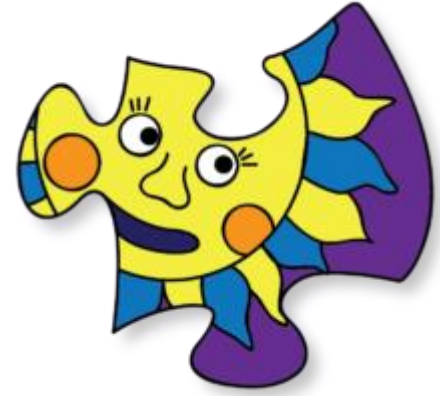
Races in Egleston Square in Jamaica Plain, MA



Demographics

- Mainly Hispanic
- Some black

The need of bilingual education



Friends of Hernandez School

- Bilingual and multicultural education for Latino Students



Community Arts Advocates



A nonprofit arts organization cultivating ongoing fundamental relationships between artists and communities by celebrating self-expression as a basic human right essential for the healthy growth of youth, individuals and communities.

PO Box 300112, Jamaica Plain, MA 02130-0030

info@communityartsadvocates.org

www.CommunityArtsAdvocates.org

Like our page on FaceBook for updated notices on events and policy issues at

<https://www.facebook.com/Community-Arts-Advocates-358026120887262/>





PUBLIC ART

fosters public and participatory art as a vehicle for personal transformation, community cohesion, and social change.



ART IN THE COMMUNITY

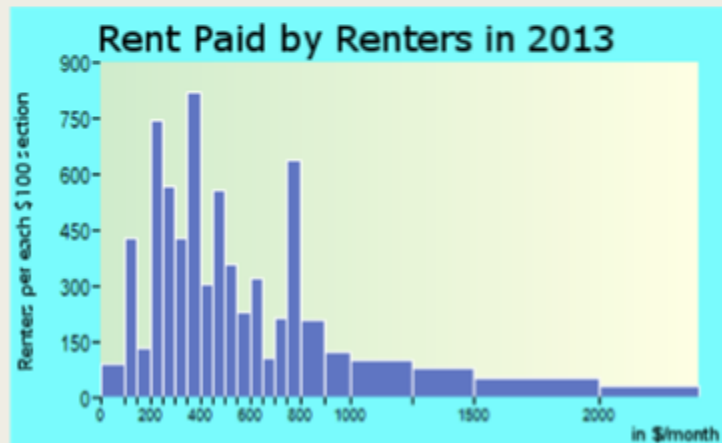
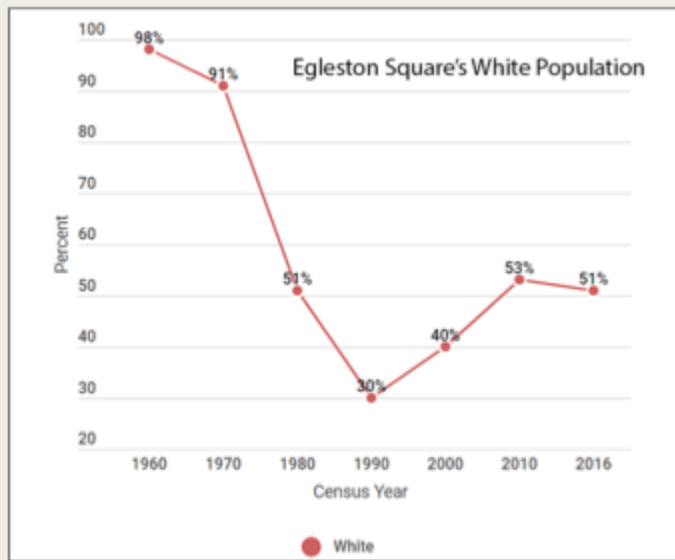
Challenges

- Historical preservation
 - *Lacks interest due to little economic gain associated with such*
- Property and Business
 - *Difficult to attract business investment*



Challenges into the 21st Century

- Lacks **healthcare** accessibility which decreases life expectancy
- Lacks **affordable housing**
- Continuous **demographic change**



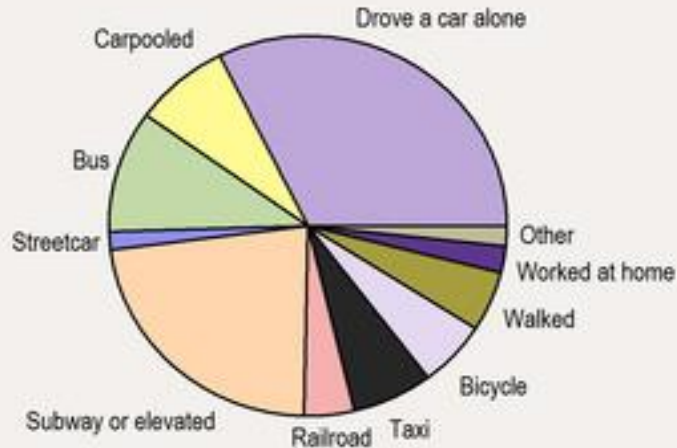
Facing the Challenges

Historically

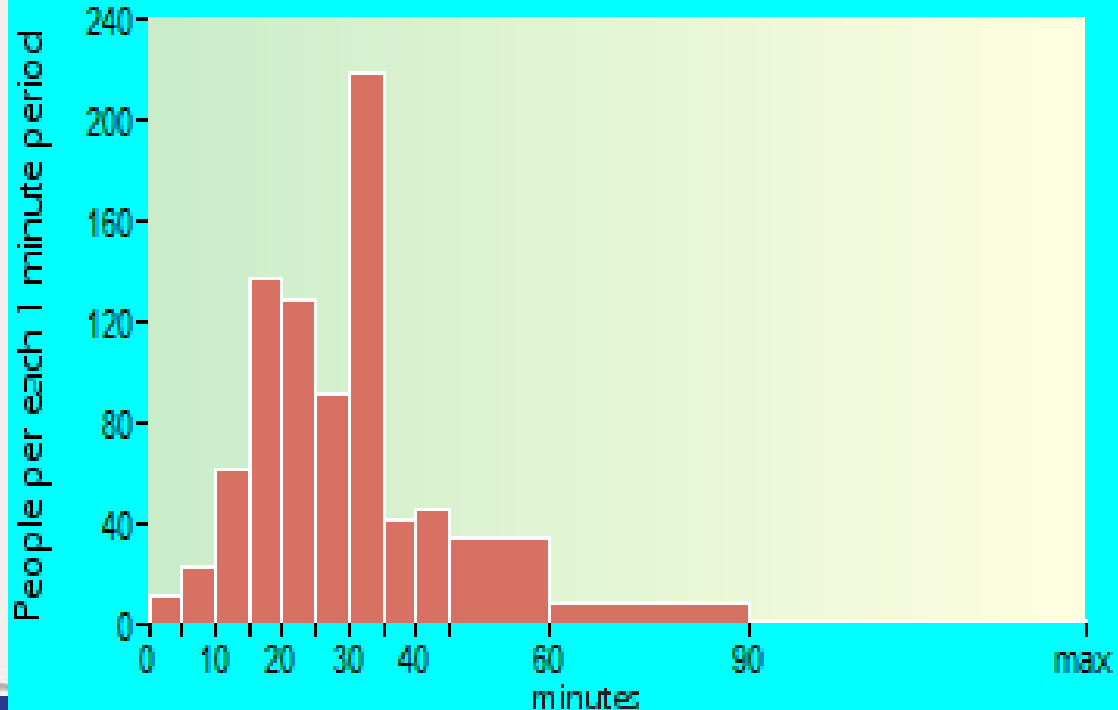
- Standing against Southwest Expressway
- Street Cars at Egleston Square Station
- Public Transportation

Modes of Transportation of the Community

Mode of transportation to work in Egleston Square



Travel Time to Work



Facing the Challenges

Present

- Increasing vibrant working class population
 - *Potential for youth engagement in the community, however, it remains a challenge*

Facing the Challenges

Future

- Boston Housing Authority
 - *Section 8 Housing*
- The Home for Little Wanderers
 - *Child physical and emotional health*



Our Service Partners

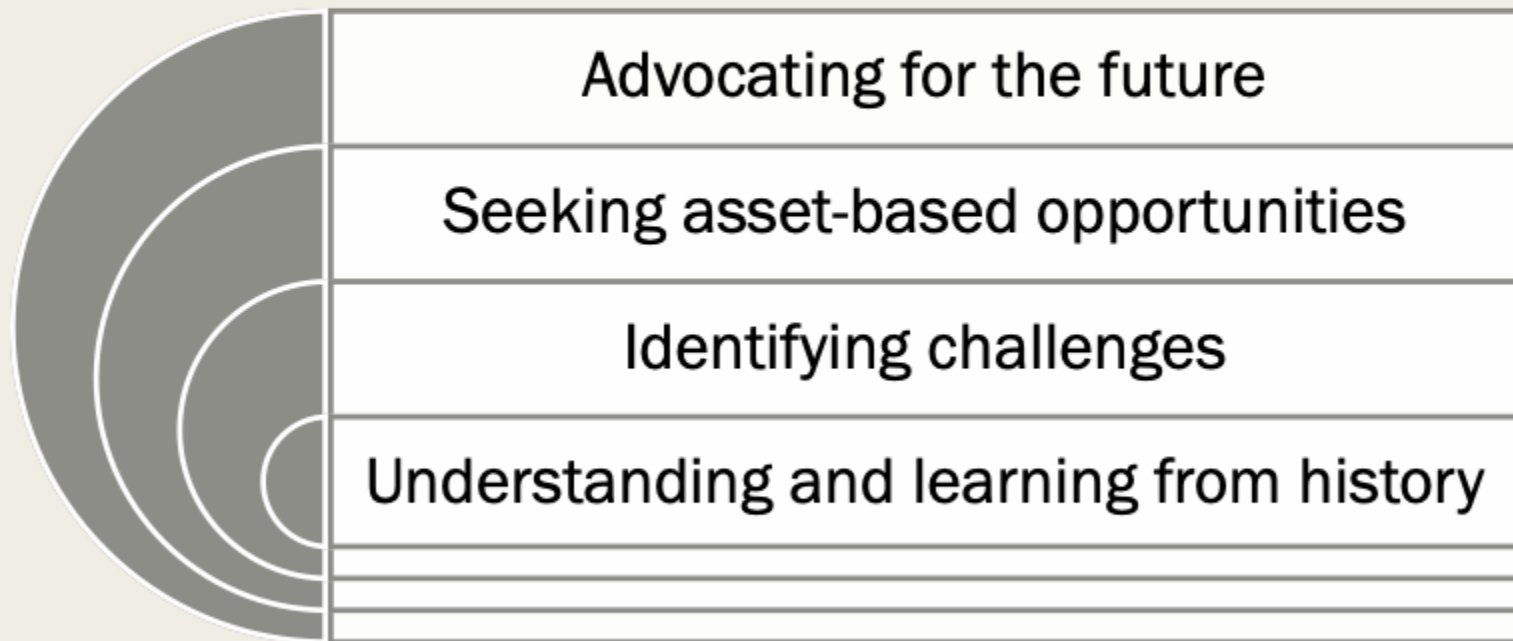
826 Boston

- Safe space for learning
- Writing for activism
- Having their stories heard

Friends of Hernandez

- Fostering bilingual and cross-cultural identity
- Quality Education

Our Story...



Selected Citations

- (1) (<https://historicboston.org/wp-content/uploads/Casebook-Egleston-Square.pdf>)
- (2) <https://www.zipdatamaps.com/nh-boston-neighborhood-egleston-square>
- (3) <http://www.city-data.com/neighborhood/Egleston-Square-Jamaica-Plain-MA.html>
- (4) <https://rafaelhernandezk8.org/about-us/our-history/>
- (5) <https://www.wbur.org/radioboston/2019/02/19/egleston-square-housing>
- (6) <https://web.northeastern.edu/themargins/washingtonstreet/egleston-square/>
- (7) <http://urbanoproject.org/we-are>
- (8) <https://www.google.com/search?q=Boylston+Public+Art+Corridor&oq=Boylston+Public+Art+Corridor&aqs=chrome..69i57.29j56j0j4&sourceid=chrome&ie=UTF-8>
- (9) <https://www.urbanedge.org/about/resources/2015-2020-strategic-plan-outcomes/>
- (10) <https://www.catholicjproxbury.com/>

Additional references:

http://www.thehome.org/site/PageServer?pagename=about_thehome

<http://www.communityartsadvocates.org/>

<https://826boston.org/about/>