

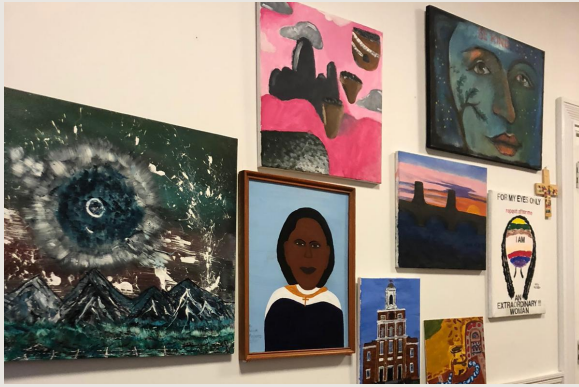


OLD WEST CHURCH

Aysha Alawadhi
Mohammed AlHunaidi
Nourah AlJouan
Deniz Aydin
Laurel O'Malley
Armando Suniaga
Bayansulu Tulbassova

EMGT5220 - Engineering Project Management
Professor John Bleakney
Service Learning - Pastor Sara Garrard
Northeastern University
December 2, 2019





Problem Statement

Old West Church should be a place open to all, where people feel safe and welcome.

The infrastructure & design of the church should support the ideals of the congregation.



Purpose & Objectives



Approach

1

Initiation

2

Planning

3

Execution



Technical Summary

Cafe

A space for socializing and collaborating. Equipped with an seating area, barista, espresso bar, bookshelves and wifi.

Bathroom (Area 1)

3 gender neutral floor to ceiling stalls, ADA compliant

Washer & Dryer (Area 2)

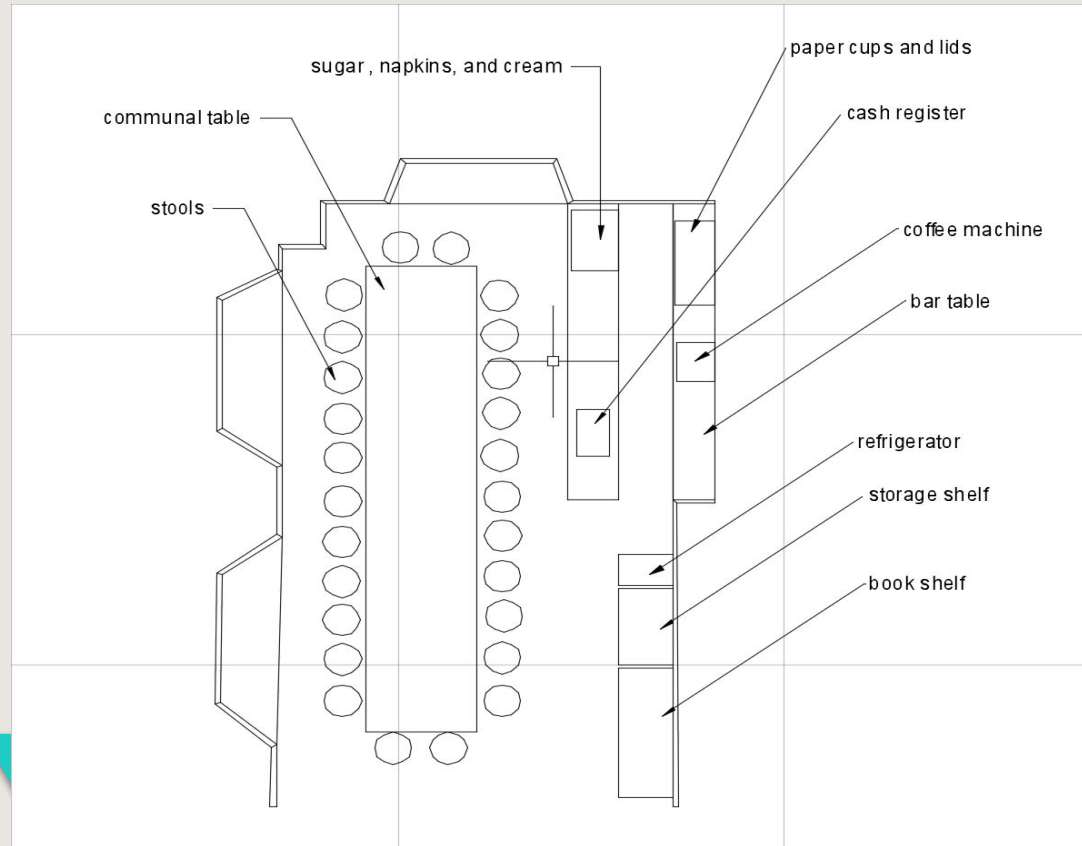
Free. equipped with detergent dispensers and a folding area.

Showers (Area 2)

1 gender neutral floor to ceiling shower stalls. Equipped with soap dispensers, ADA compliant. Area includes lockers, bench, mirror and hair dryer



Coffee shop floor plan



Floor Plan

Shower: Base, Drain, Shower head, ADA Compliant

Lockers, bench, mirror, hair dryer

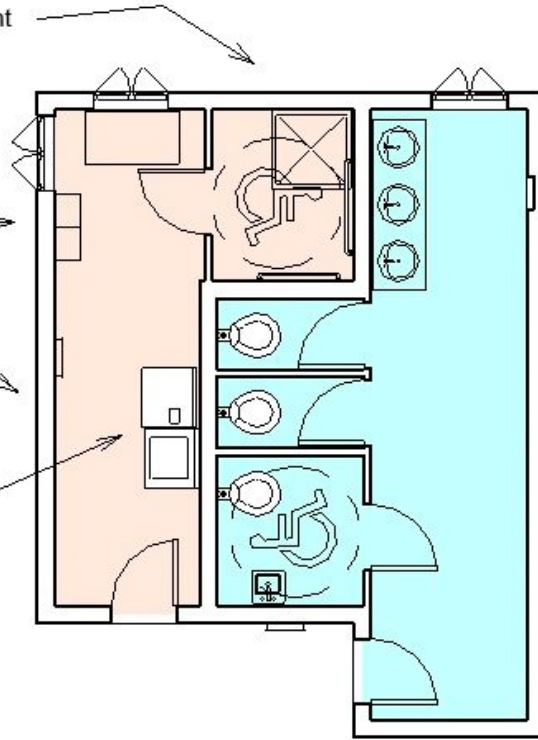
Washer/Dryer + Showers

Washer, Dryer, Detergent dispenser

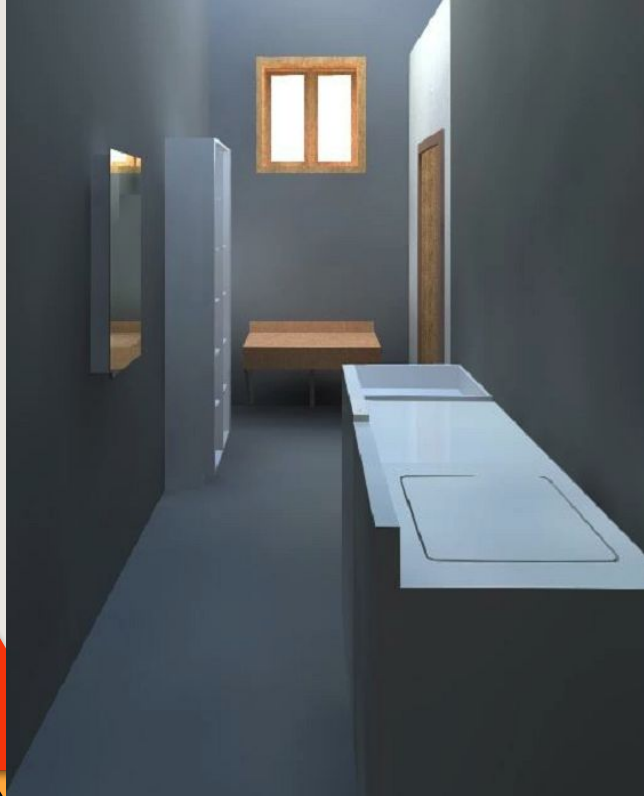
2 toilet stalls, 3 sinks, mirror, baby changing table

Bathroom

Toilet, sink, grab bars, ADA Compliant



Washer + Dryer + Shower Area



Bathroom Area



Implementation Plan Summary

Met with the client, Pastor Sara, and the supervisor, Prof. Bleakney

Brainstorming

- Getting to know our service-learning site
- As a team
- Improvement ideas

Church visits

- Taking measurements
- Photos

Designing

- Revit - Floor plans



Execution Plan Summary

- How are we producing it?
 1. Provide a detailed set of steps and layouts for implementing the new bathrooms and the cafe
 2. Create CAD drawings for the new layouts that visualize the plan
 3. Build a preliminary schedule using Gantt chart
 4. Create a budget and range of prices



Financial Plan & Budget

1

Equipment & Appliances

The expenses for the layout changes and furniture purchased

2

Service & Delivery

Expenses for the delivery and installation services / employee wages

3

Fundraiser

Final step: Creating a fundraiser to collect the necessary budget for the improvements



Financial Plan & Budget - Continued

**Bathroom &
Laundry**

MIN: \$12,709.19

MAX: \$27,085.18

Coffee Shop

MIN: \$1,448.88

MAX: \$25,655.26

TOTAL

MIN: ~ \$14,000

MAX: ~ \$53,000



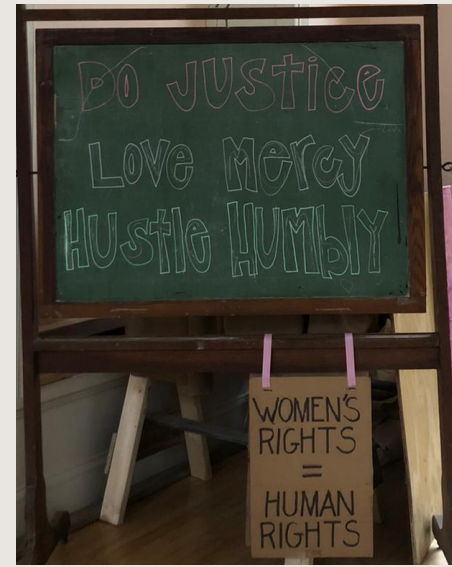
What Sets This Apart

- Resources available
 - Prof. Bleakney- experience with project management
 - Sara Flynn- middle person between group and pastor
 - Pastor Sara Garrard- fundraising; social media savvy
 - Team- mix of Industrial and Mechanical Engineers; diverse experience
 - Access to home improvement retailers and contractors
- Access to facilities
 - Basement and first floor available for measurements
- Will to get it done
 - Genuine interest in giving back to the community



Thank you!

Q&A



**Our bathrooms
are for all
genders.**

Literally all humans.

So you do you, human.

**We only ask that you flush
and wash your hands.**



Thanks, humans!