

# Exploring Majors Through Service

FSEM 1100: Connections and Decisions

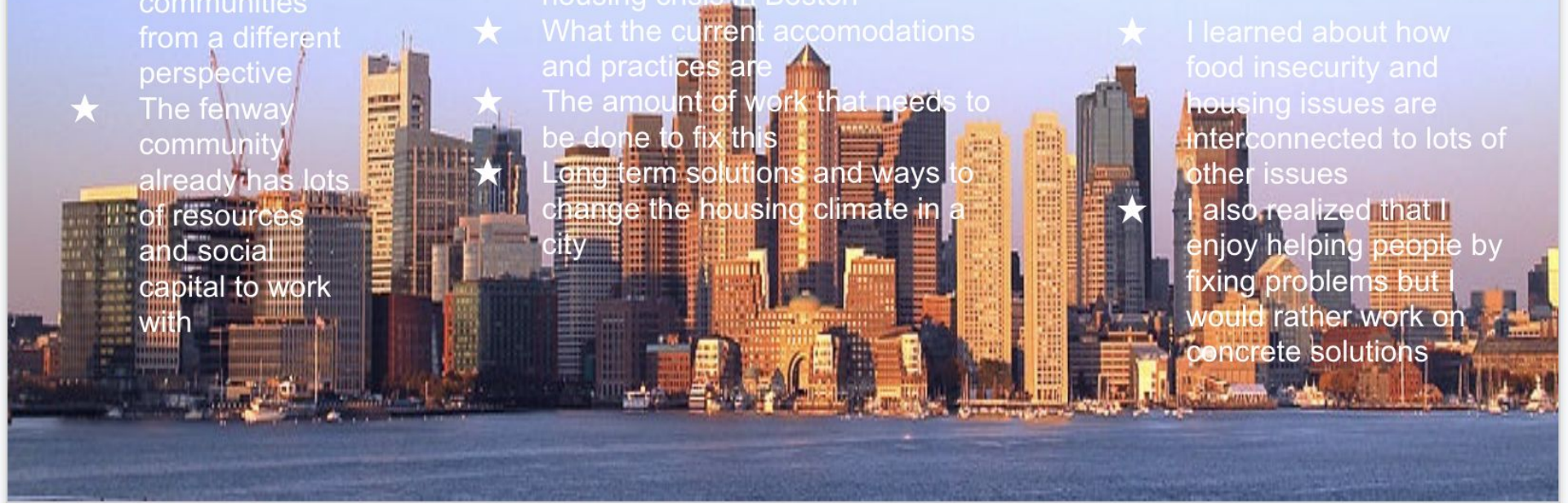
**A** sset  
**B** ased  
**C** ommunity  
**D** evelopment



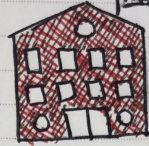
- ★ I learned how to view communities from a different perspective
- ★ The fenway community already has lots of resources and social capital to work with

- ★ I learned about the current housing crisis in Boston
- ★ What the current accommodations and practices are
- ★ The amount of work that needs to be done to fix this
- ★ Long term solutions and ways to change the housing climate in a city

- ★ I learned about how food insecurity and housing issues are interconnected to lots of other issues
- ★ I also realized that I enjoy helping people by fixing problems but I would rather work on concrete solutions



THE FENWAY



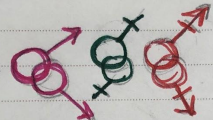
HOUSING INJUSTICE

Residents evicted by universities

SOCIAL & ECONOMIC JUSTICE

progressive neighbourhood

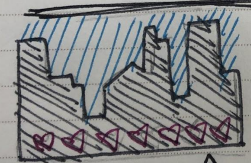
SAFE SPACE FOR QUEER PEOPLE



BLM

SAFE SPACE FOR BIPDC

MY MAJOR & CAREER EXPLORATION



HELPING MY COMMUNITY

HELPING THE LESS FORTUNATE



EQUALITY & JUSTICE



MAKING A BETTER WORLD

# Nikki's Audio Reflection

<https://drive.google.com/file/d/1aTlvZ2DNY-YA9gKRExPQn4I4-gyFwGk/view?usp=sharing>